



WinWedge[®]

SoftwareWedge for Windows

Connect any instrument to your PC and instantly input real-time serial data into any application.

Install...

***WinWedge and watch your data
“POP” into your Windows applications
instantly and accurately.***

- WinWedge provides full two-way I/O for data collection and instrument control.
- WinWedge transfers serial data quickly, accurately, and formatted to your exact specifications.
- WinWedge collects real-time data on any serial port (RS232, RS422 or RS485) — it can even handle multiple serial ports simultaneously.
- WinWedge offers powerful DDE support in Windows.
- WinWedge is extremely easy to set-up and use. No programming required!
- WinWedge provides *unlimited* FREE — and helpful — technical support. Contact our software engineers for immediate answers to your questions by phone, fax or e-mail. Or visit our website for 24-hour assistance.

**Your
Satisfaction
Is Guaranteed!**

*Test WinWedge
yourself and see how
it can save you
time while
eliminating
errors!*

**With WinWedge, you'll save
time by eliminating tedious,
error-prone manual data entry.**

Imagine Having Your Graphs, Charts and Tables Updated with Real-Time Serial Data

WinWedge captures serial data, custom tailors it to meet your needs, then transfers the data to any Windows or DOS application — either by sending keystrokes to the application's window or by passing the data through Dynamic Data Exchange (DDE) conversations.

WinWedge:

- Will add complete data acquisition and instrument control to any Windows application, including Excel, Access, LIMS and MMIs.
- Easily sets up in minutes using a full menu-driven configuration. There's no programming involved!

- Collects real-time data on any serial port (RS232, RS422 or RS485). It even collects data from several ports simultaneously.
- Will quickly diagnose and correct serial communications problems with a powerful "analyze" feature.

WinWedge also transmits prompts or commands out the serial port to control or query your instruments directly from within other Windows applications or directly from WinWedge. Think of WinWedge as a fully customizable serial I/O device driver that will save you time while eliminating data entry errors.

**Receive
TCPWedge and
FileWedge free
when you purchase
WinWedge 32 Pro.
Use these programs to
collect data from
TCP/IP networks
or data files.**



Choose the SoftwareWedge Products that Best Meet Your Data Acquisition Needs

WinWedge 32 Pro

WinWedge 32 Pro collects data from and controls any serial device, no matter how complex the serial output or how sophisticated the control required. Use it with industrial and lab instruments, quality and process control devices, PBX systems, PLCs and more.

WinWedge 32 Pro supports advanced parsing, filtering and formatting of text, binary, hex, octal and ASCII data.

Expanded DDE support allows other applications to completely control WinWedge and all serial I/O. This lets you create extremely powerful data acquisition and device control interfaces from within any Windows application that supports DDE (including Excel, Access, MMIs and LIMS).

WinWedge 32 Pro is a true 32-bit version for 32-bit Windows. It supports up to 100 communication ports simultaneously and all 32-bit Windows features, including long file names. It also supports TCP/IP communications and is 30 percent faster.

WinWedge 16 Pro

This 16-bit pro edition for Windows 3.1 is similar to

WinWedge 32 Pro, but it only supports up to 9 serial ports simultaneously. It's not as fast, and it doesn't support TCP/IP data collection.

Advanced Features of WinWedge 32 Pro

- 30 powerful math functions, including scaling, conversions, arithmetic and logical operators.
- Virtual Instrument Mode, which allows you to test WinWedge without an instrument connected to your PC.
- A Pre-Input Character Translation table that can be used to simplify complex input data record structures.
- Hot Key activated output strings and Hot Key control.
- An optional Disk File Logging mode for serial data. Use it to log serial data to a file in the background.
- Extended support for two-way I/O to give you more options for controlling serial devices.
- Support for any serial data, including Binary, Hexadecimal and Octal, as well as ASCII.
- Maximum field lengths up to 64K (versus 256 bytes in the standard edition) and baud rates to 56 KB.
- **TCPWedge™ FREE.** This software

enables you to communicate with any TCP/IP network port address (Ethernet /Internet) from any Windows application. It works just like WinWedge 32 Pro, but for TCP/IP communications instead of serial I/O.

- **FileWedge™ FREE.** FileWedge easily inputs data from any disk file directly into any Windows application. Works just like WinWedge except data is read from a disk file instead of a serial port.

WinWedge v1.2

This edition is designed to work with simple devices, such as bar code readers, electronic scales, calipers and gages, or any other device that transmits simple text data — either single field data or comma delimited data. It supports basic prompting and control of serial devices, selectable input buffer size (up to 32K) and date and time stamps.

DOSWedge and DOSWedge Pro

DOS versions of SoftwareWedge are also available. Use these to send data to DOS applications, even DOS programs running under Windows.

User Comments

“Great job! I never thought it would take less than 15 minutes to get the SoftwareWedge to do what I needed. I have not been this satisfied with a software product in years!”

– Mark Soldini, Leaseplan

“What service! I was not only impressed, but I will use you as a standard in the future. TAL you are tops in my book! An A+ for service!!!”

– Doug Hayes, US Army

“SoftwareWedge is the Swiss Army Knife of software. You can do almost anything with it!”

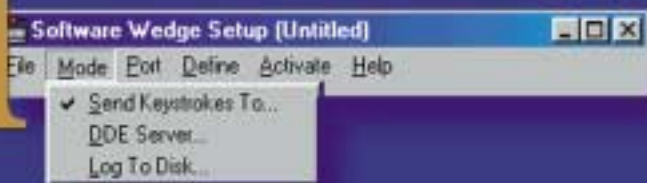
– Hank Meewis, Hunter Douglas

“We chose WinWedge for its ease of use and its ability to provide a transparent interface with Excel. It is a real Godsend. I absolutely recommend it.”

– Brian Jones, Physics Department,
Colorado State University

Set-Up is as Easy as 1-2-3-4

1



1. Select how you want the data collected:

The Mode Menu lets you send data to other Windows application programs as keystrokes or by Dynamic Data Exchange (DDE) or send log serial data to a disk file in the background.

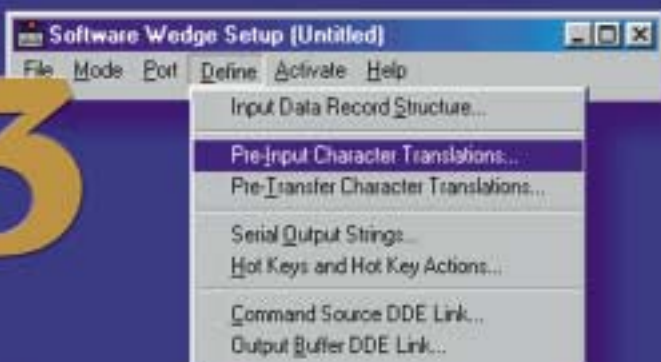
2



2. Choose the parameters for your serial device:

The Communication Port Settings Dialog Box lets you configure your communications settings. Use the RS232 diagnostic tools provided to easily debug serial communication parameters.

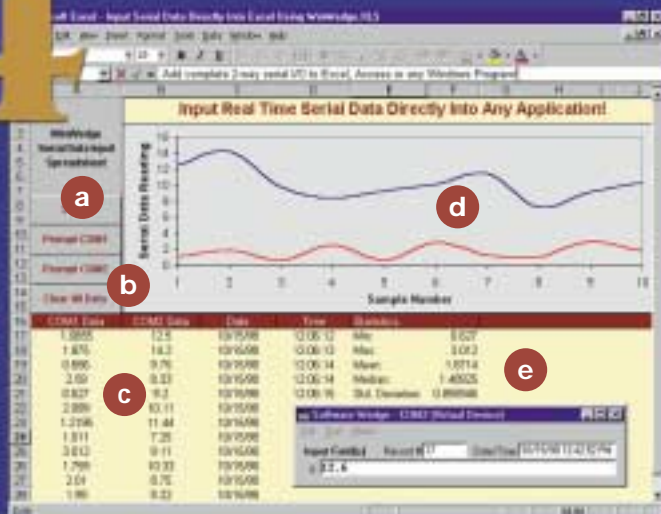
3



3. Define how you want the serial data to be parsed, filtered and translated:

The Define Menu lets you specify how to parse, filter and format your data to fit the exact format required by your application. It also lets you pre-define automatic output strings to be sent to a serial device and configure any Hot Keys and Hot Key actions.

4



4. Activate WinWedge and watch your serial data "pop" into your application:

- Create buttons or macros in your application that control WinWedge and perform serial I/O functions.
- Send out commands or data to control your instruments — from within your application or directly from WinWedge.
- Input serial data from any device, even multiple devices, directly into any application program.
- Create charts and graphs in your application that automatically update with real-time data from your serial devices.
- Perform real-time analysis of your serial data.

LOOK...

Who's Already Using SoftwareWedge...

Thousands of companies rely on TAL Tech's products for all types of mission critical data acquisition applications. Most major research, industrial and fortune 1,000 companies have already purchased these products. After more than a decade on the market, SoftwareWedge has been proven 100 percent reliable — even within the most demanding environments.

TALtech

InstrumentAL Software

Please contact us for immediate assistance:

2027 Wallace Street • Philadelphia, PA 19130

215•763•7900 • 800•722•6004 • Fax: 215•763•9711

www.taltech.com